

## SPECIFICATIONS

### 49MS75A

PANEL		
Screen Size	48.50 inches (1232.00mm) diagonal	
Panel Technology	IPS	
Aspect Ratio	16 : 9	
Native Resolution	1,920 x 1,080 (FHD)	
Pixels (H x V x 3)	6,220,800	
Brightness	240cd/m <sup>2</sup> (TBD)	
Contrast Ratio	1,000:1 (TBD)	
Dynamic CR	150,000:1 (TBD)	
Color Gamut	72% (TBD)	
Viewing Angle (H x V)	178 x 178 (TBD)	
Color Depth	1.06 Billion	
Response Time	8ms (G to G BW) typ. (TBD)	
Surface Treatment	Hard Coating (3H), Anti-Glare Treatment of the Front Polarizer (Haze 10%)	
Life Time	50,000 Hrs (TBD)	
Orientation	Portrait & Landscape	
VIDEO(PC)		
Max Input Resolution	1,920 x 1,080@60Hz (HDMI, DVI-D, Display Port, OPS)	
Recommended Resolution	1,920 x 1,080@60Hz (HDMI, DVI-D, Display Port, OPS)	
H-Scanning Frequency	30 - 83kHz (HDMI, DVI-D, Display Port, OPS)	
V-Scanning Frequency	60Hz (HDMI, DVI-D, Display Port, OPS)	
Pixel Frequency	148.5MHz (HDMI, DVI-D, Display Port)	
Sync Compatability	Digital	
Video Input	HDMI1, HDMI2/OPS, DVI-D, Display Port	
Picture Mode	Vivid, Standard, APS, Cinema, Sports, Game, Expert1/2	
Color Temperature	Warm, Medium, Cool	
CONNECTIVITY		
Input	Digital	HDMI (1), HDMI/OPS (1), DP (1), DVI (1)
	Audio	DVI (3.5Φ 1)
	External Control	RS232C (1), RJ45 (1), IR/Light sensor (1), Pixel Sensor (1)
	USB	Yes (1)
Output	HDTV Formats	HDMI : 720p / 1,080i / 1,080p
	Digital	DP (1) from HDMI/DVI/DP/OPS input
	Audio	External Speaker (1)
External Control	RS232C (1)	
AUDIO		
Auto Volume	No	
Balance	Yes	
Audio Power	20W (10W x 2)	
Speaker On/Off	Yes	
Clear Voice II	Yes	
Sound Mode	Standard, News, Music, Cinema, Sports, Game	
PHYSICAL SPECIFICATION		
Color	Black	
Bezel Width	8.4mm (Even)	
Monitor Dimension (W x H x D)	1,095 x 625.2 x 37.3	
Weight (Head)	22kg	
Monitor with Optional Stand Dimensions (W x H x D)	1,095 x 699.9 x 298.7mm	
Weight (Head+Stand)	23.4kg	
Monitor with Optional Stand & Speaker Dimensions (W x H x D)	1,095 x 699.9 x 298.7mm	
Weight (Head+Stand+Speaker)	24.2kg	
Carton Dimensions (W x H x D)	1,330 x 810 x 174mm	
Packed Weight	25.3kg	
Handle	No	
VESA™ Standard Mount Interface	400 x 400	
SPECIAL FEATURES		
Temperature Sensor	Yes	
Auto Brightness sensor	Yes	
Cooling FAN	No	
Tile Mode	Yes (Up to 15 x 15)	
Natural Mode @Tile Mode	Yes	
Source Selection	DVI-D, HDMI, Display Port, USB, OPS	
Brightness/Contrast/Backlight	Yes	

SPECIAL FEATURES		
Position/Size	No	
Auto Config/Phase	No	
Language (OSD)	English, French, German, Spanish, Italian, Korean , Chinese(Simplified), Chinese(Original), Portugues(Brazil), Swedish, Finnish, Norwegian, Danish, Japanese, Russian, Portugues(Europe), Dutch, Czech, Greek	
Language (USB Playback)	English, French, German, Spanish, Italian, Korean , Chinese(Simplified), Chinese(Original), Portugues(Brazil), Swedish, Finnish, Norwegian, Danish, Japanese, Russian, Portugues(Europe), Dutch, Czech, Greek	
Language (Manual)	English, French, Italian, German, Spanish, Portugues, Hungarian, Greek, Russian, Dutch, Kazakh, Ukrainian, Polish, Arabic, Indonesian, Korean, Japanese, Turkish, Czech, Taiwanese, Slovak	
Language (ESG)	English, French, Italian, German, Spanish, Portugues, Greek, Polish, Czech, Slovak	
ISM Method	No	
Advanced	Dynamic Contrast, Dynamic Color, Clear White, Skin Color, Noise Reduction, Digital Noise Reduction, Gamma, Black Level	
Time	Clock, On/Off Time, Power on Delay, Auto Off, Automatic Standby	
Information	Model/Type, Software Version, Serial Number, IP Address, Homepage	
Input Label	Yes (PC/DTV)	
Auto Power/Source Memory	Yes	
Key Lock	Yes	
DPM Select	Yes	
Energy Saving	Yes (Minimum, Medium, Maxium)	
Smart Energy Saving	Yes	
Power Indicator On/Off	No	
Logo Light On/Off	No	
File Play with USB	Yes	
PIP/PBP	No	
Internal Memory	16GB (System 4GB + Available 12GB)	
Wi-Fi	Dongle Ready	
ENVIRONMENT CONDITIONS		
Operation Temperature	0 °C to 40 °C	
Operation Humidity	10 % to 80 %	
POWER		
Power Supply	100-240V-, 50/60Hz	
Power Type	Built-In Power	
Power Switch	No	
Power Consumption	Typ.	125W
	Smart Energy Saving	95W
Power off	DPM	0.7W (DVI-D, HDMI, DP)
	Power off	0.5W
STANDARD(CERTIFICATION)		
Safety	UL / cUL / CB / TUV / KC (TBD)	
EMC	FCC Class "A" / CE / KCC (TBD)	
ErP / Energy Star	NA / Yes (Energy Star 6.0)	
MEDIA PLAYER COMPATIBILITY		
Slot PC compatible (optional)	No	
External Media player Attatchable	Yes (MP500/MP700), KT-OPSA	
SOFTWARE COMPATIBILITY		
SuperSign-w lite	Yes	
SuperSign-c	Yes	
ACCESSORY		
Accessory	Remote Controller (include battery 2ea), Power Cord, IR/Light sensor receiver, CD (Owner's Manual), HDMI Cable	
Optional Accessory	SP-2100, ST-200T, LSW440S (TBD), AN-WF500 (WiFi USB Dongle), KT-OPSA (OPS Kits), KT-SPO	
MIRROR		
Glass Coating	Transmittive Ratio : 38.0 ± 5%(TBD) / Reflective Ratio : below 55% (TBD)	
Transmission Color Coordination	x=0.324, y=0.339 (TBD)	
Reflection Color Coordination	L* = 82.48, a* = 0.78, B* = -1.83 (TBD)	
Glass Thickness	2.8T	
Software Feature	screen off mode	

# webOS for Signage 49MS75A (MIRROR DISPLAY)

49MS75A | 48.50" (1232.00 mm) diagonal



## FEATURES

- Built-in Mirror
- OPS Compatibility - OPS-ready and supports OPS Kit (optional)
- Supports Wi-Fi ready (Dongle)
- Supports SNMP
- Enhanced Failover - Auto signal switching even from internal memory
- High Performance & Cost-effective SoC - Embedded high performance player for heavy contents (FHD movie clips)
- webOS for Signage Platform - Web-centric platform, simple customization, intuitive UX, simple management



Portrait

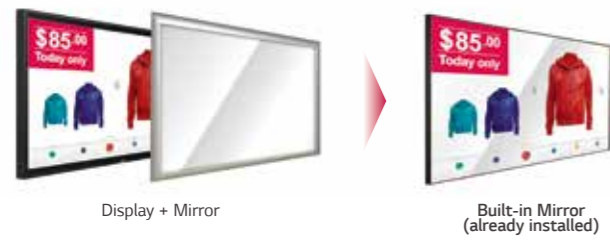


Landscape

## Integrator-side

### INSTALLATION CONVENIENCE

No need for additional installations.



### ADD CREATIVE OPTIONS

Use sensors and contents for maximum exposure. Multi-touch, proximity sensors, gestures can be added by integrator/ contents provider.

- increase contents exposure
- surprise customers (e.g. display digital contents at unexpected moments)

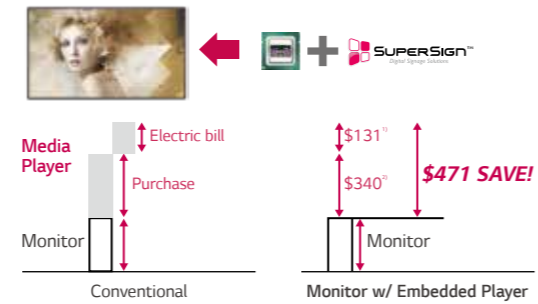
### OPS Compatibility

Compatible with the Open Pluggable Specification (OPS), users have the flexibility to choose their appropriate media player.



### No Extra Media Player

No additional media player comes to TCO reduction.

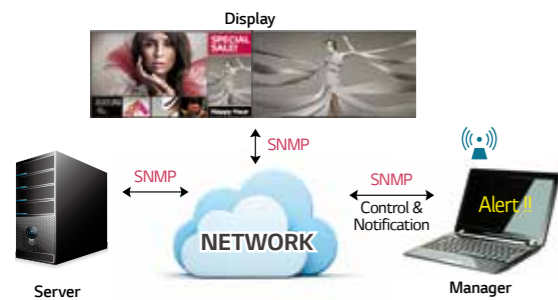


- 1) 3-year savings on electricity bills based on 24 hrs. of use each day.
- 2) Cost of 3rd party's low-end media player.

### Advanced Self-diagnosis

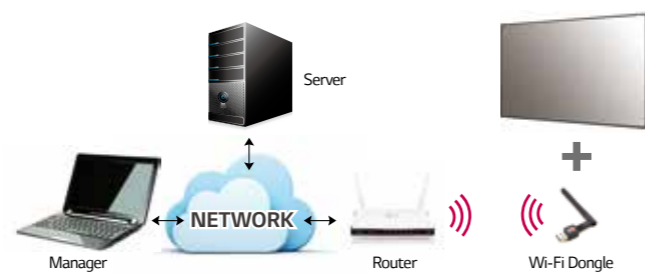
#### SUPPORT SNMP

LG's signage monitors are compatible with 3rd-party device management solutions that follow SNMP standards.



#### SUPPORT WI-FI

A Wi-Fi Dongle can be connected to the MS75A for easy installation and simple management.



### Easy Installation & Maintenance

Only power & LAN required.



### Smart SoC Built-In for Signage

#### EMBEDDED WEB SERVER

Remote Contents and H/W Status Monitoring without additional server.

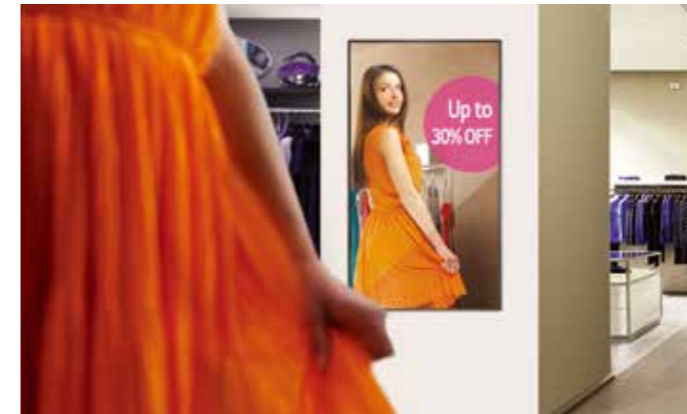


#### SIMPLE CUSTOMIZATION

Simple customization function will be provided. Our solution can be customized through an SDK to showcase your logo or improve compatibility.



## Application



### FASHION

- Venue : Fitting room, Store
- Virtual fitting, Recommended clothing, View purchasing legacy



### HOTEL

- Venue : Lobby, Elevator, Bathroom
- Display Hotel information, Advertisement



### BEAUTY

- Venue : Hair salon, Cosmetic
- View hairstyle legacy, Recommended hairstyle, Display virtual hairstyle simulation, Target marketing (Ads)

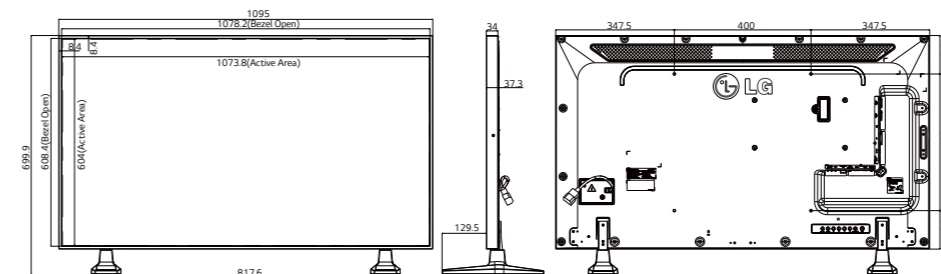


### FITNESS

- Venue : Gym, Fitness Center
- Customized exercise program, Virtual training

### DIMENSION (unit : mm)

49"



### INTERFACE

