



# Samsung SMART Signage SHF Series Stretched Display

Engage customers with powerful content in a slim, versatile package

## Highlights

- New widescreen 16:4.5 stretched display
- Provide excellent visibility in any lighting condition
- Allow display flexibility and customize content from portrait to landscape
- Manage and display content easily with DP Loop out and USB playback
- Captivate your audience with rich vibrant content even in the tightest spaces

Samsung SHF Series Stretched Displays offer a 16:4.5 stretched format to enable space-conscious retailers to deliver the right information that fits the needs of customers making purchasing decisions. Samsung SHF displays create a more convenient shopping experience that encourages new sales opportunities. The ability to position the display in either portrait or landscape mode enables versatile, customizable content to be displayed without any sacrifices. Even in restricted spaces, such as store shelves or low ceiling interiors, Samsung SHF Series stretched displays with high brightness and non-glare panels boast eye-catching effect without obstructing movement of human traffic. With the capability to operate continuously 24/7, and the ability to connect multiple displays over a daisy chain, Samsung SHF Series displays offer a versatile signage solution to meet any need.

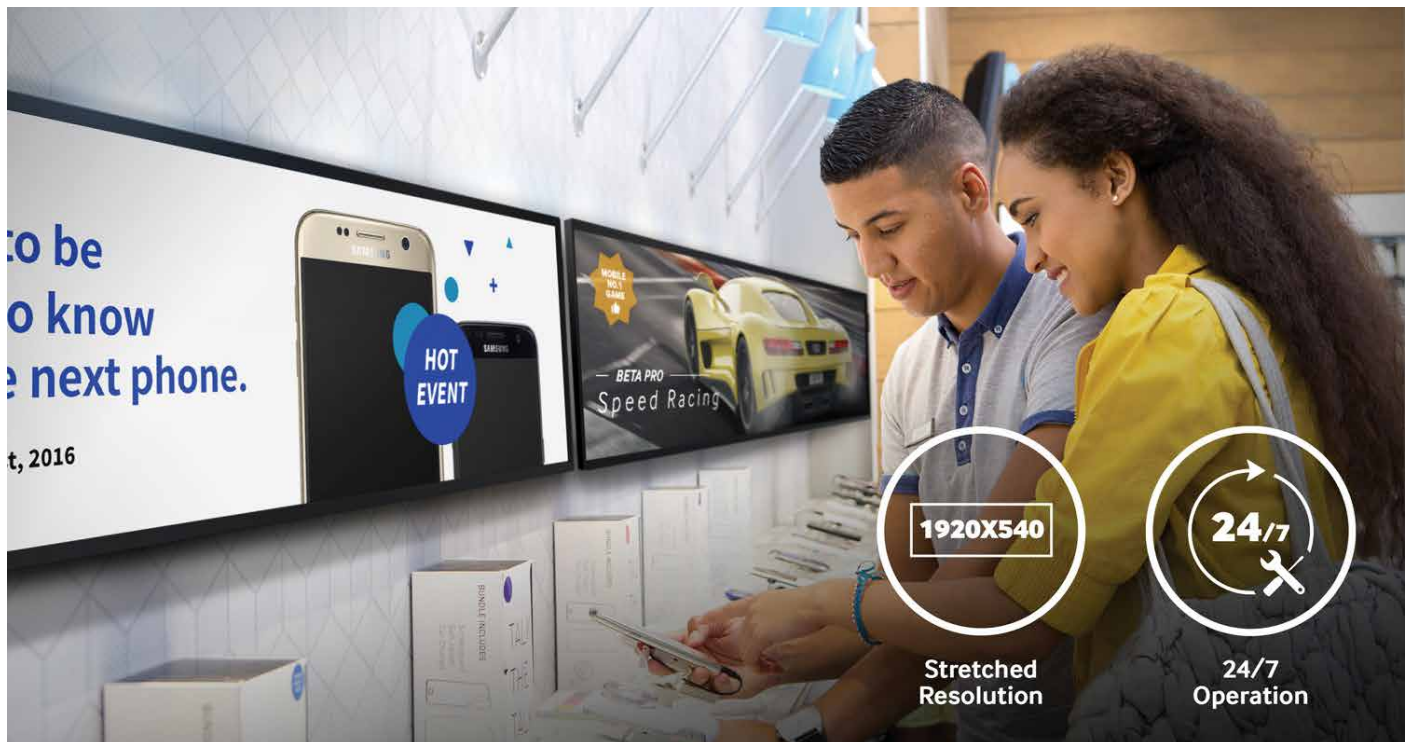


## Maximize space and optimize content with Samsung SMART Signage solutions

Digital signage today needs to be versatile and cost effective with an emphasis on maximizing space efficiency. There has been an increasing need to utilize niche spaces with effective signage solutions. Samsung SHF Series displays, with 16:4.5 wide screen stretched display offer the ability to effectively communicate information in small, narrow spaces such as store shelves, ceilings, and corridors.

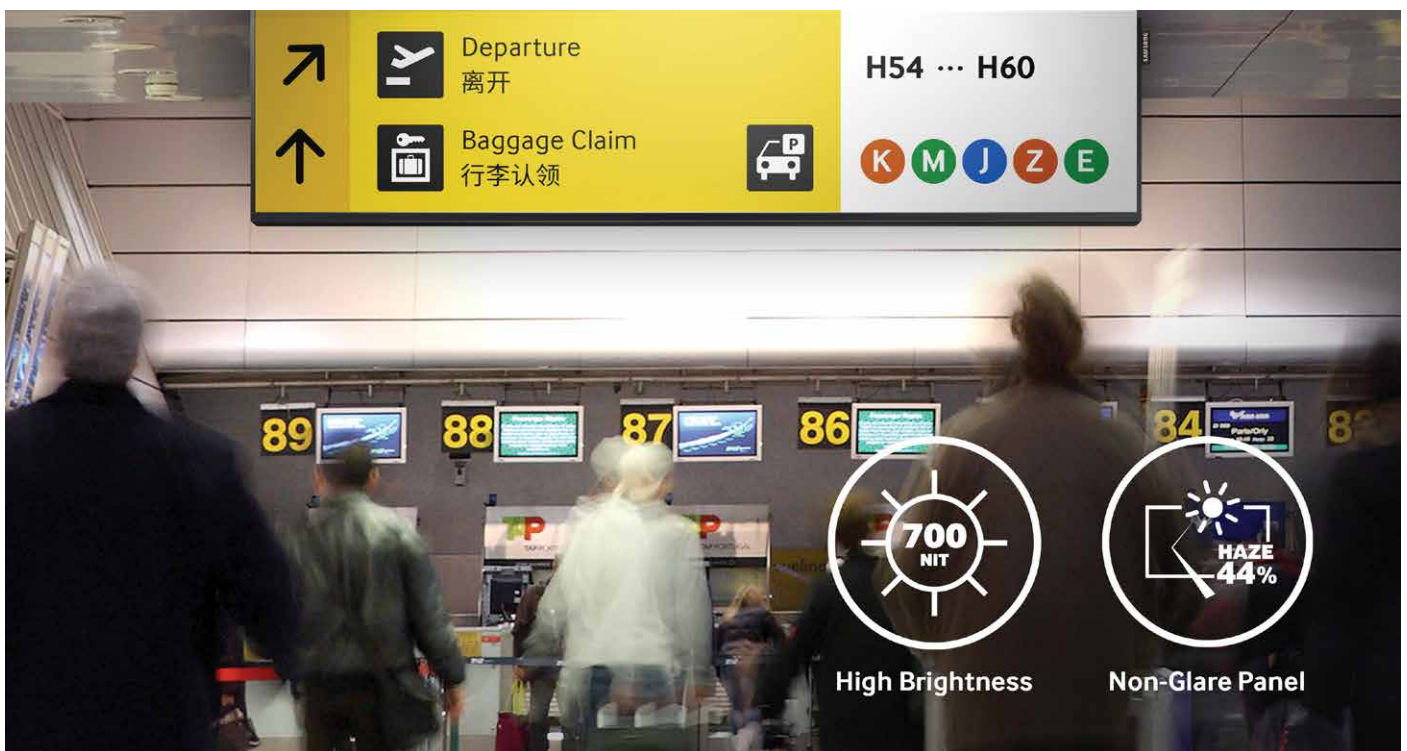
When used in a 24/7 transportation environment, Samsung SMART Signage SHF Series displays are an invaluable asset in keeping travelers apprised of changing schedules providing clear, easy to read, vibrant information that can be consumed at a glance.

In retail environments, SHF Series displays offer unique opportunities to promote products or entice customers with product information using minimal amount of space. With the capability of continuous 24/7 non-stop operation, you can rest assured that customer attention will be at an all time high.



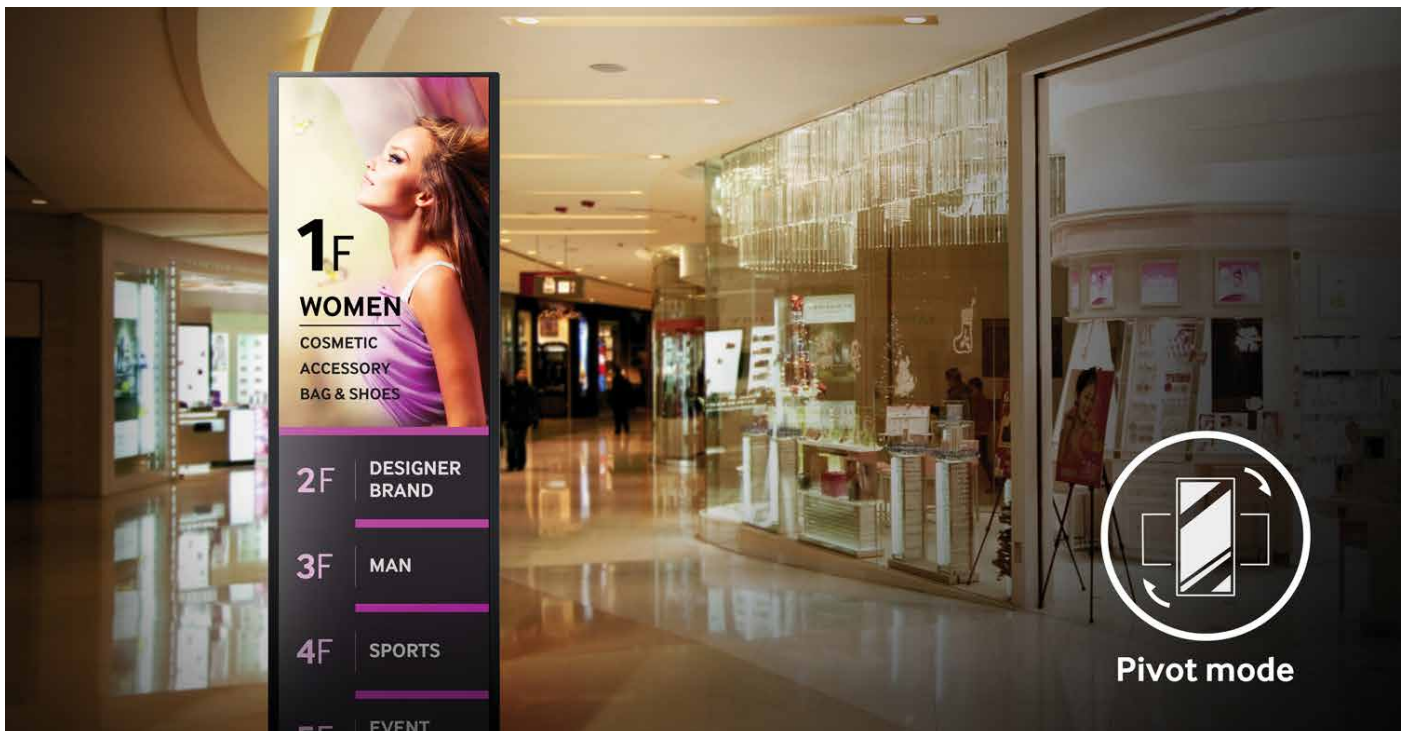
## Deliver sharp images in various lighting conditions

Samsung SMART Signage SHF Series displays deliver vibrant, realistic images offering an unparalleled visual experience. Featuring brightness levels of up to 700 nit, these displays deliver the clearest, richest images regardless of lighting conditions. SHF Series displays excel in situations with strong light where glare may present an issue. With a non-glare (44% haze) panel, you can rest assured that your content will not be obstructed by lighting conditions outside of your control, and you can be confident that your content will look great anywhere.



## Customize content from portrait to landscape and display with simplicity

Samsung SHF Series displays offer pivoting capability along with image rotation software that can change image orientation from portrait to landscape for greater display flexibility. Images do not require rotation in image editing software to make them appear correctly in a different orientation as this capability is handled automatically within the display. The 16:4.5 wide screen format enables you to create a rich interactive experience in a multitude of ways in a variety of spaces. Content is fully optimized and the display allows for greater flexibility since it can accommodate for content in any orientation. Easily deliver vibrant, realistic images with ease and simplicity. On playing contents of 540x1920 size, pivot mode makes it optimal.



## Maximize viewer engagement in a minimum amount of space

Samsung SHF Series displays feature a slim profile with a depth of only 39.9 mm which allows you to maximize available space. This enables the display to be installed in areas where space is limited and allows content to blend seamlessly with the environment in a slim, light, design with reduced power consumption for lower operation costs.

A slim bezel design allows for fewer distractions in the content and allows your message to shine in a clear, un-interrupted way.



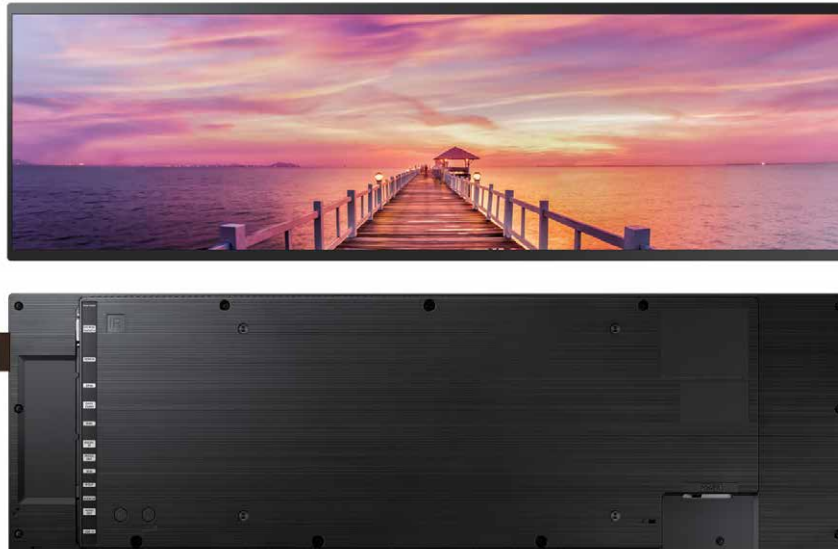
## Daisy chain multiple displays without the need for additional equipment

Due to the relative novelty of UHD in commercial display settings, few media players currently offer support for UHD streaming. To meet this demand, Samsung launched an optional UHD-capable SBB, which can attach to the back of the QMF Series. The simple installation of this SBB eliminates unnecessary wire clutter and also removes the need to create separate housing for the media player.

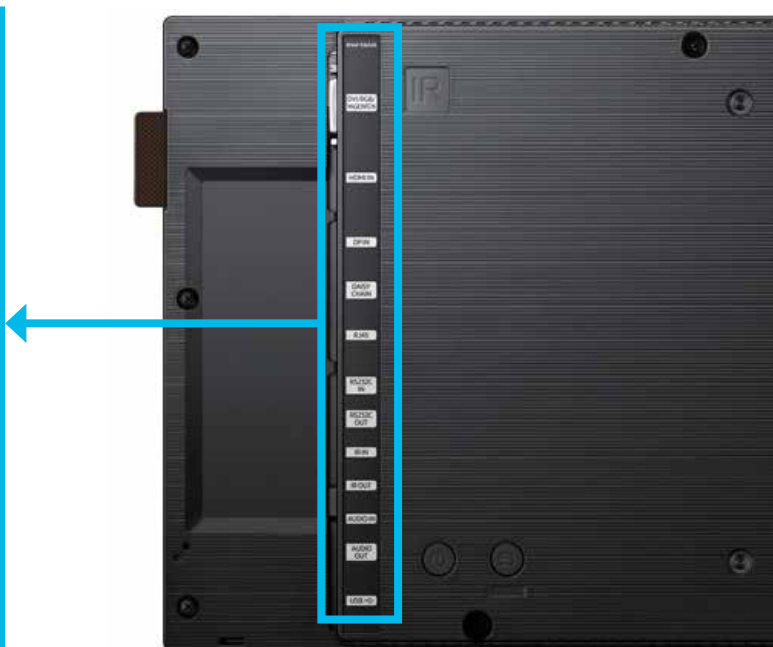


## Specifications

- SHF ( 37" )



## Connectors



1. DVI/RGB/MAGICINFO IN
2. HDMI IN
3. DPIN
4. DAISY CHAIN
5. RJ45
6. RS232C IN
7. RS232C OUT
8. IR IN
9. IR OUT
10. AUDIO IN
11. AUDIO OUT
12. USB



# Specifications

## SHF ( 37" )

### Specifications

Model		SH37F	
Panel	Diagonal Size	Class	37"
		Measured	37.0" / 93.98cm
	Type		60Hz E-LED BLU
	Resolution		1920x540 (16:4.5)
	Pixel Pitch(mm)		0.4686(H) x 0.4686(V)
	Active Display Area(mm)		899.712(H) x 253.044(V)
	Brightness(Typ.)		700nit
	Contrast Ratio(Typ.)		4000:1
	Viewing Angle(H/V)		178:178
	Response Time(G-to-G)		16ms
	Display Colors		8bit - 16.7M
	Color Gamut		72%
	Operation Hour		24/7
	Haze		44%
Display	H-Scanning Frequency		54 ~ 69.75kHz
	V-Scanning Frequency		48 ~ 62HZ
	Maximum Pixel Frequency		148.5MHz
Sound	Speaker Type		N/A
Connectivity	INPUT	RGB	DVI-I, Display Port 1.2
		VIDEO	HDMI 1.4 (1)
		HDCP	HDCP 2.2
		AUDIO	Stereo mini Jack
		USB	USB 2.0 x 1
	OUTPUT	RGB	DP1.2(Loop-out)
		VIDEO	N/A
		AUDIO	Stereo mini Jack
		Power Out	N/A
	EXTERNAL CONTROL		RS232C(in/out) thru Stereo mini Jack, RJ45
	EXTERNAL SENSOR		IR
Tuner		N/A	
Power	Type		Internal
	Power Supply		AC 100 - 240 V~ (+/- 10 %), 50/60 Hz
	Power Consumption	Max[W/h]	77
		Typical[W/h]	56
		BTU(Max)	263
		Sleep mode	less than 0.5W
Off mode	less than 0.5W		

# Specifications

## SHF ( 37" )

### Specifications

Model		SH37F	
Mechanical Spec	Dimension (mm)	Set	915.8 x 281.1 x 39.9
		Package	1102 X 122 X 369
	Weight (kg)	Set	6.6kg
		Package	8.5kg
	VESA Mount		400*200mm
	Protection Glass		N/A
	Stand Type		Foot Stand (Optional)
Bezel Width (mm)		5.7 (Side), 12 (Top/Bottom)	
Operation	Operating Temperature		0°C~ 40°C
	Humidity		10~80%
Feature	Key		Slim & Light LFD with Built-in MagicInfo Player S3, SSSP 3.0
	Internal Player (Embedded H/W)	Processor	Cortex-A9 1GHz Quad Core CPU
		On-Chip Cache Memory	L1 (I/D) : 32KB / 32KB L2 (Unified) : 1MB
		Clock Speed	1GHz CPU Quad
		Main Memory Interface	1.5GB / Dual 48bit DDR3-933 (1866MHz)
		Graphics	2D & 3D Graphics Engine - Up to 1920x1080. 32bpp - Supports OpenGL ES
		Storage (FDM)	8GB (2GB Occupied by O/S, 6GB Available, )
		Multimedia	Video Decoder - MPEG-1/2, H.264/AVC (Dual) - VC-1, JPEG, PNG,VP8 Audio DSP (Decoder) - AC3 (DD), MPEG, DTS and etc.
		IO Ports	USB 2.0
		Operating System	Samsung Proprietary OS(VDLinux)
Certification	Safety		CB (Europe) : IEC60950-1/EN60950-1 , CCC (China) : GB4943.1-2011 , PSB (Singapore) : PSB+IEC60950-1 , NOM (Mexico) : NOM-001-SCFI-1993 , IRAM (Argentina) : IRAM+IEC60950-1 , SASO (Saudi Arabia) : SASO+IEC60950-1 , BIS(India) : IEC60950-1 / IS13252 , NOM(Mexico) : Tuner : NOM-001-SCFI-1993 / Tunerless : NOM-019-SCFI-1998 , KC(Korea) : K 60950-1 , EAC(Russia) : EAC+IEC60950-1 , INMETRO(Brazil) : INMETRO+IEC60950-1 , BSMI(Taiwan) : BSMI+IEC60950-1 , RCM(Australia) : IEC60950-1/AS/NZS 60950-1 , UL(USA) : cUL60950-1 , CSA (Canada) : cUL , TUV (Germany) : CE , NEMKO (Norway) : CE
	EMC		FCC (USA) Part 15, Subpart B Class A CE (Europe) : EN55022:2006+A1:2007 / EN55024:1998+A1:2001+A2:2003 VCCI (Japan) : VCCI V-3 /2010.04 Class A KCC/EK (Korea) : Tuner : KN13 / KN20 / Tunerless : KN22 / KN24 BSMI (Taiwan) : CNS13438 (ITE EMI) Class A / CNS13439 (AV EMI) / CNS14409 (AV EMS) / CNS14972 (Digital) C-Tick (Australia) : AS/NZS CISPR22:2009 CCC(China) :GB9254-2008 / GB17625.1-2012 GOST(Russia/CIS) : GOST R 51317 Series / GOST 22505-97 / EN55022:2006+A1:2007 / EN55024:1998+A1:2001+A2:2003
	Environment		
Accessories	Included		QSG, Warranty Card, Regulatory Guide, Power Cord, Batteries, Remote Control, RS232C(IN) adaptor, Screw, External remote control sensor, Cover-Jack
	Optional	Stand	N/A
		Mount	N/A
		Specialty	N/A
		Media Player	SBB(Not attachable)

NOTE.

---

## ABOUT SAMSUNG ELECTRONICS CO., LTD.

Samsung Electronics Co., Ltd. inspires the world and shapes the future with transformative ideas and technologies. The company is redefining the worlds of TVs, smartphones, wearable devices, tablets, cameras, digital appliances, medical equipment, network systems, and semiconductor and LED solutions. For the latest news, please visit Samsung Newsroom at <http://news.samsung.com>

## SMART SIGNAGE

For more information about Samsung SMART Signage Mirror Display, visit [www.samsung.com/business](http://www.samsung.com/business) or [www.samsung.com/displaysolutions](http://www.samsung.com/displaysolutions)

Copyright © 2017 Samsung Electronics Co. Ltd. All rights reserved. Samsung is a registered trademark of Samsung Electronics Co. Ltd. Specifications and designs are subject to change without notice. Non-metric weights and measurements are approximate. All data were deemed correct at time of creation. Samsung is not liable for errors or omissions. All brand, product, service names and logos are trademarks and/or registered trademarks of their respective owners and are hereby recognized and acknowledged.

Samsung Electronics Co., Ltd.  
416, Maetan 3-dong, Yeongtong-gu  
Suwon-si, Gyeonggi-do 443-772, Korea

2017-01



Scan this code with your smartphone  
to download the Samsung Display Solutions Mobile App.